

# AVPro Edge CX42/62-AUHD Driver

## Release Notes

Current Version: 1.0.2

## Introduction

This driver has been designed to provide 1-way control of an AVPro Edge CX System via TCP/IP and RS232.

This driver has been written and tested using the following AVPro Edge device types:

- CX42-AUHD
- CX62-AUHD

## Driver Configuration

It is recommended that the AVPro CX system be installed, configured and tested by a suitably qualified engineer, according to AVPro's documentation, prior to integration with this driver.

## Driver Installation

Two driver file's exist in the release package:

Driver File Name	Description
AC-CX42-AUHD.cd2	The driver file for the 4x2 matrix
AC-CX62-AUHD.cd2	The driver file for the 6x2 matrix

# Adding the Drivers

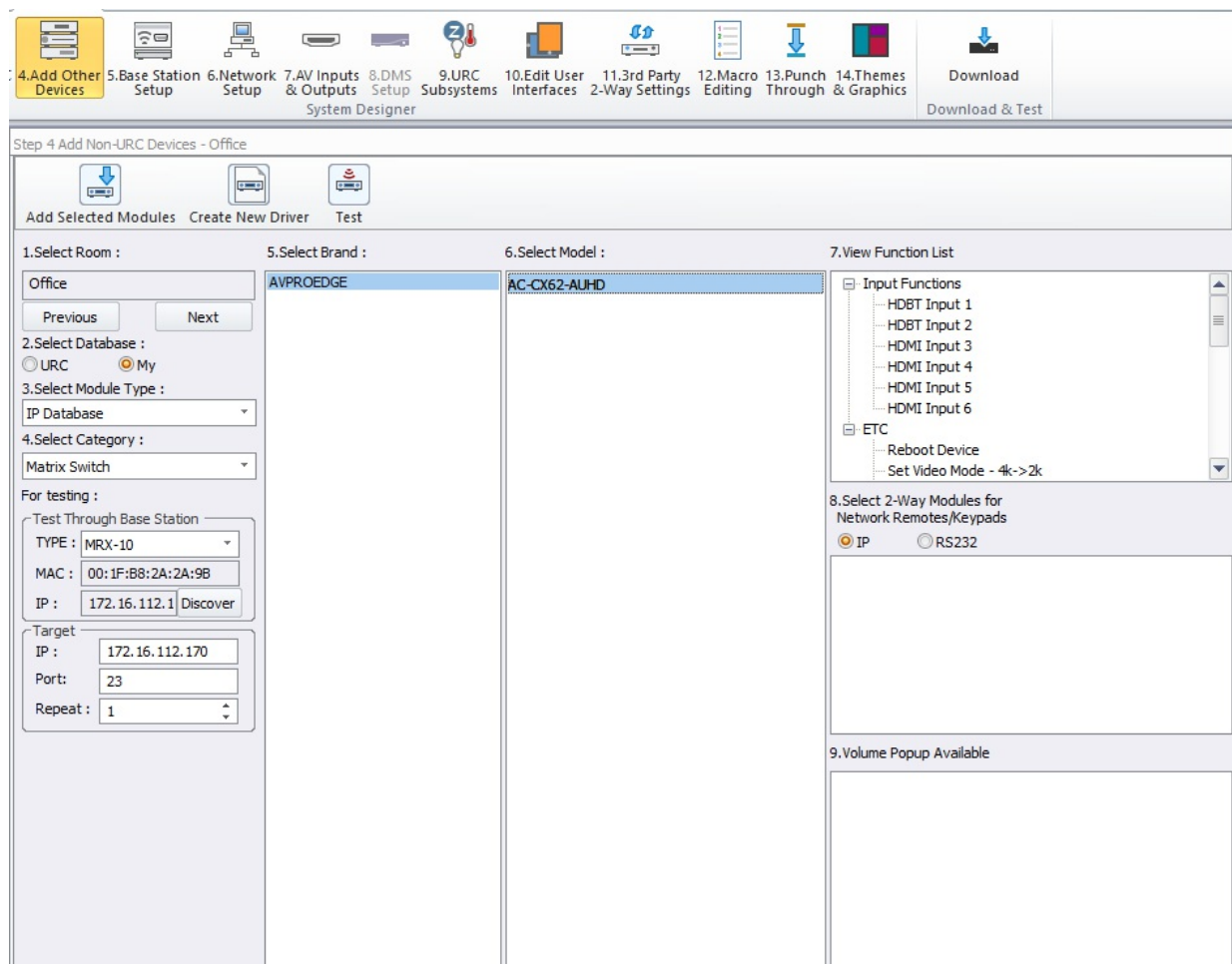
There are four variations of the driver that can be installed:

- AC-CX42-AUHD (4x2 - RS232)
- AC-CX62-AUHD (6x2 - RS232)
- AC-CX42-AUHD (4x2 - IP)
- AC-CX62-AUHD (6x2 - IP)

These drivers are very similar except that they natively support a different number of input devices in Accelerator.

To add the driver:

- Select a room to place to the driver
  - It doesn't really matter where this driver goes but it would make sense to locate it in the project where you have it physically in the installation.
- Choose **Program** -> 4. **Add Other Devices**.
- Ensure **Select Database** is set to **My**.
- Choose either **IP** or **RS232** database in **Select Module Type**
- Set Select Category to **MATRIX SWITCHES**.
- Choose **AVPROEDGE** from the **Select Brand list**.
- From **Select Model** choose the desired driver.
- Click **Add Selected Modules** to add the device to the room.



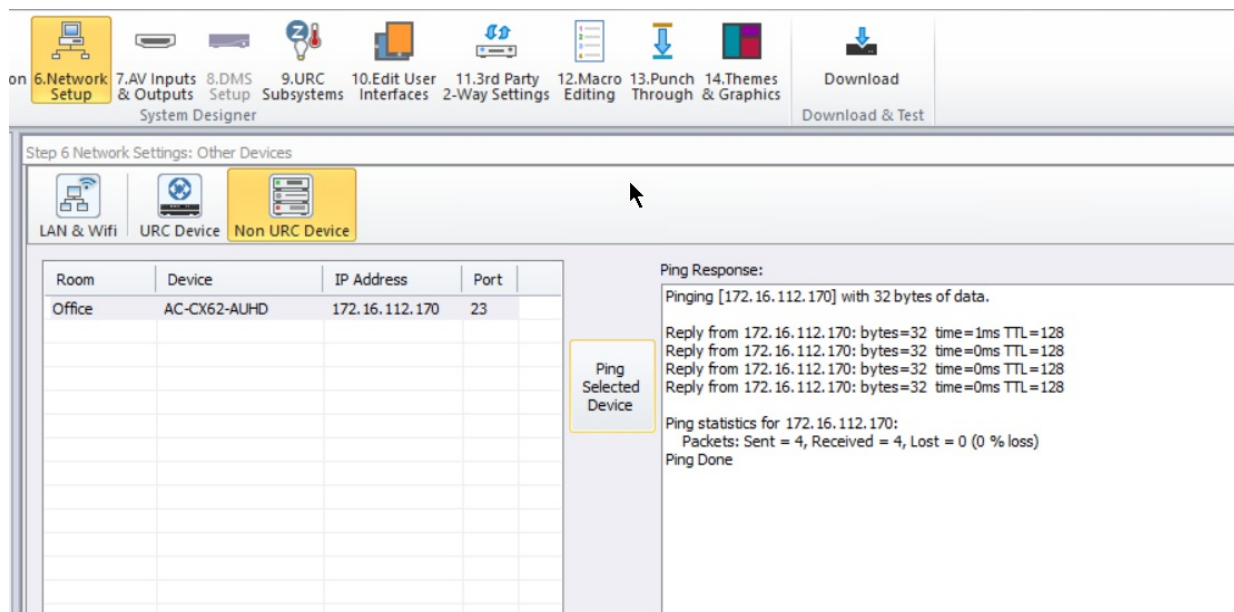
## Configuring the Driver

The driver must be configured to properly support your devices.

### IP Address

The IP Address of the CX system must be provided to the driver.

- Choose **Program -> 6. Network Setup.**
- Select **Non URC Device** tab.
- For each instance of the driver, provide the correct **IP address** in the table.
  - Note that the port should be set automatically but for reference the correct port is **23**



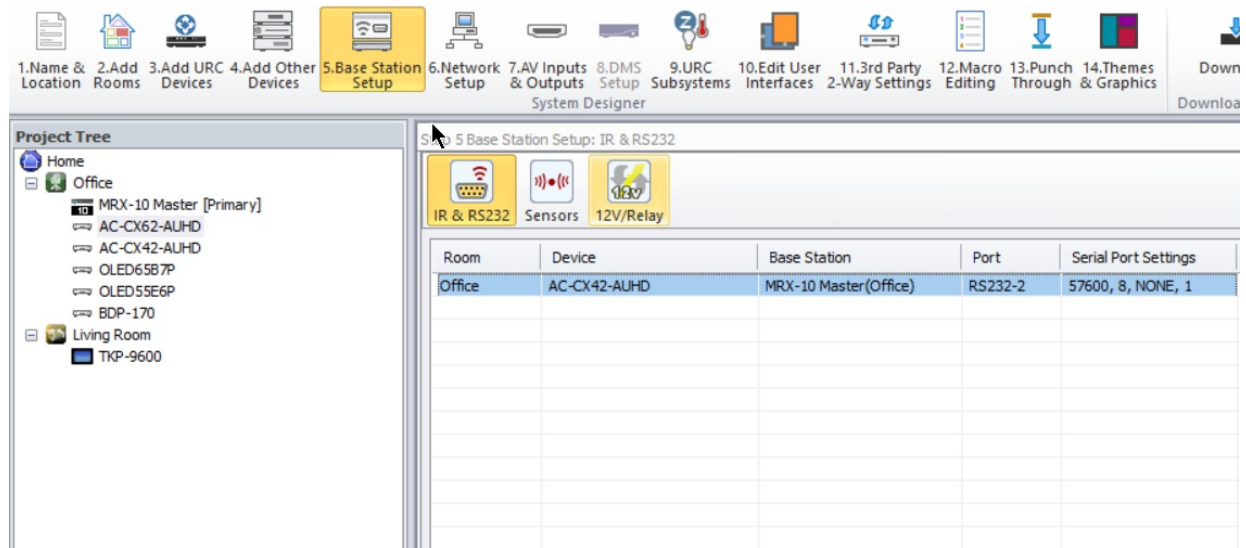
## RS232 Settings

The correct RS232 settings of the CX system must be provided to the driver.

- Choose **Program -> 5. Base Station Setup.**
- Select **IR & RS232** tab.
- For each instance of the driver, provide the correct **RS232 Settings** in the table.

These settings can be found below:

- **Port:** The RS232 port connected to the device from the controller
- **Serial Port Settings:**
  - **Baud Rate:** 57600
  - **Data:** 8
  - **Parity:** None
  - **Stop:** 1



## Configure Inputs and Outputs

The driver can automatically switch between inputs and outputs if configured correctly.

Please ensure that you have installed the driver with the required number of inputs and outputs. The following variations are available:

- AC-CX42-AUHD (4x2 - RS232)
- AC-CX62-AUHD (6x2 - RS232)
- AC-CX42-AUHD (4x2 - IP)
- AC-CX62-AUHD (6x2 - IP)

Choose **Program -> 7. AV Inputs and Outputs** to configure the inputs and outputs for the matrix.

To configure the **inputs**:

- Select the **Inputs** tab.
- Choose the desired **CX** system from the **Select Device with Inputs** drop-down menu
- From the list of **Available Devices** drag each device you wish to configure as an input to the correct HDMI Input.

Step 7 AVR and TV Connections: Assign AV Sources to Devices with Inputs

☒ Inputs
 ☐ Zone Assignment

Select Device with Inputs  
 AC-CX62-AUHD(Office)
   
 Previous Next

Available Inputs
   

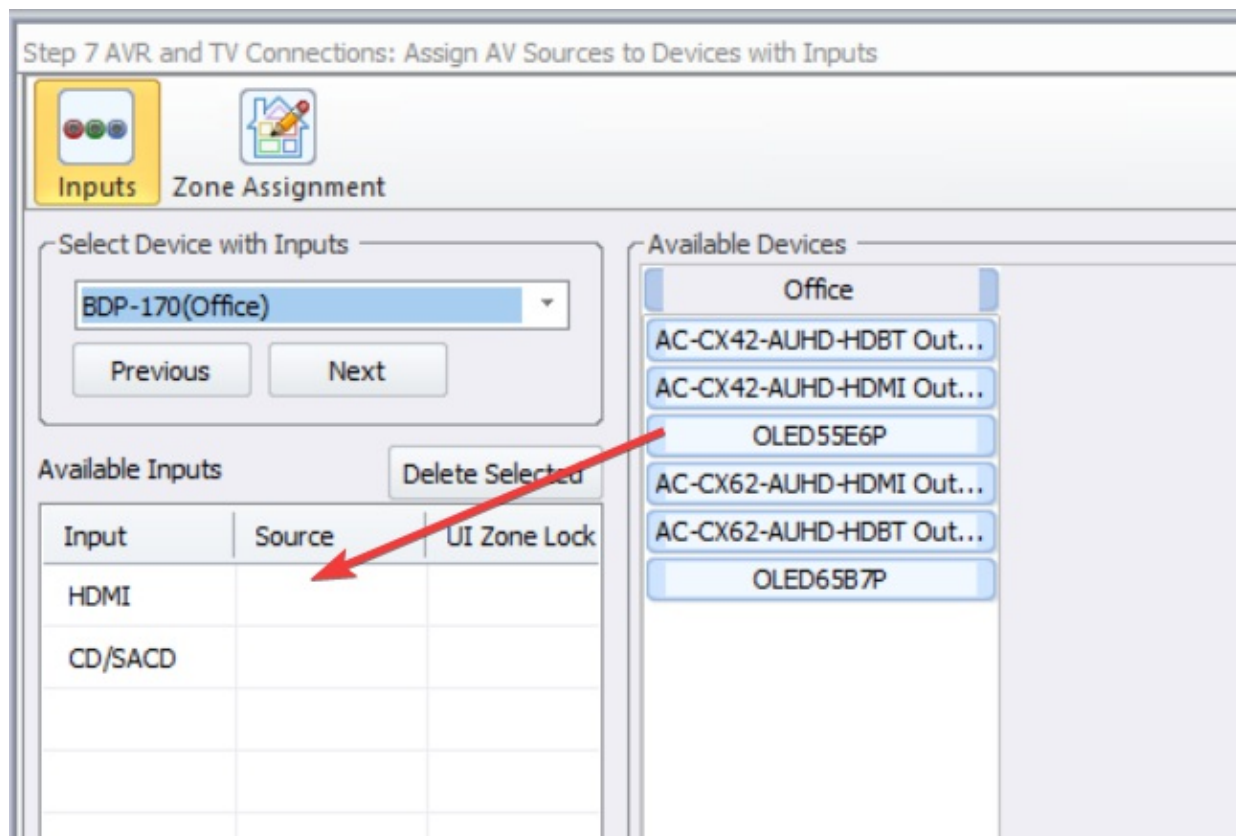
Input	Source	UI Zone Lock
HDBT Input 1		All
HDBT Input 2		All
HDMI Input 3		All
HDMI Input 4		All
HDMI Input 5		All
HDMI Input 6		All

Delete Selected

Available Devices
   
 Office
   
 AC-CX42-AUHD-HDBT Out...
   
 AC-CX42-AUHD-HDMI Out...
   
 OLED65B7P
   
 OLED55E6P
   
 BDP-170

To configure the **outputs**:

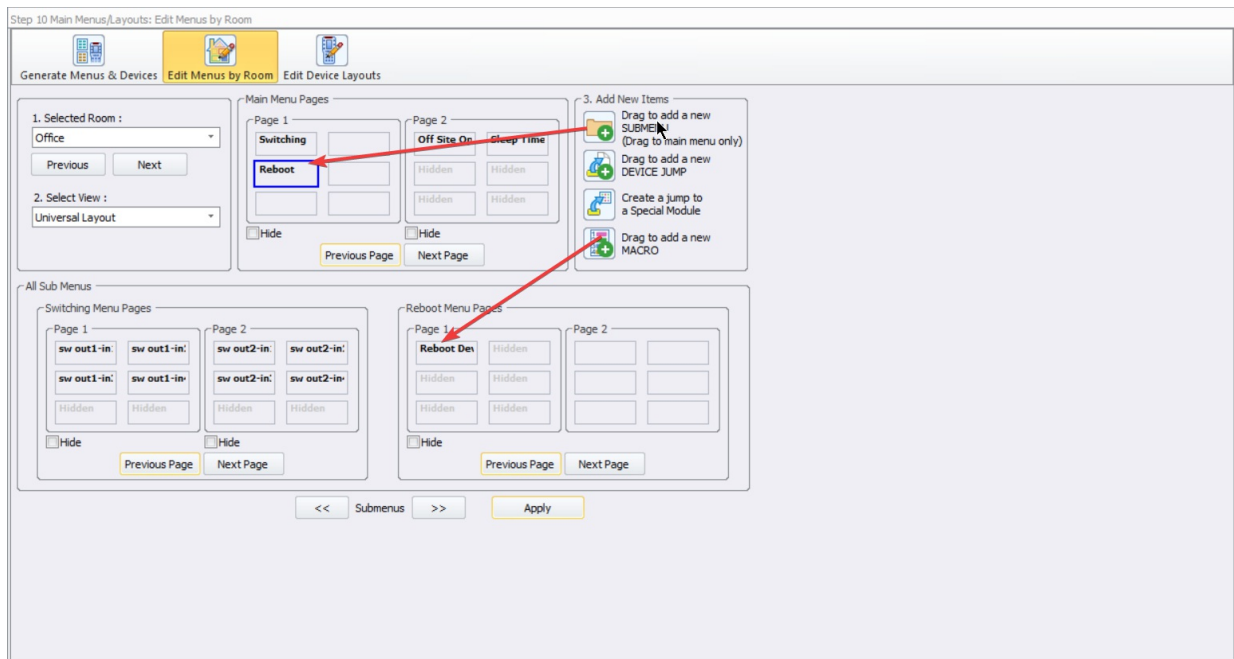
- Select the **Inputs** tab.
- Choose the device you wish to provide the **CX matrix** device output to as an input from the **Select Device with Inputs** drop-down menu
- From the list of **Available Devices** drag the correct **CX matrix** output to the selected device HDMI input.



## User Interface

There is no built in user interface provided for this driver. However, you can configure buttons with attached macros that can be used to control the various functions of the driver:

- Choose **Program -> 10. Edit User Interfaces**
- Select the **Edit Menus by Room** tab
- Add a new sub menu to the main menu by dragging the option from the **3. Add New Items** panel into the **Main Menu** panel for the room where you wish this menu to appear
- You can double click on the name **Empty** to rename to something more appropriate
- In the sub menu section you can then drag the **new macro** option from the **3. Add New Items** panel into the sub-menu panel to add a new button



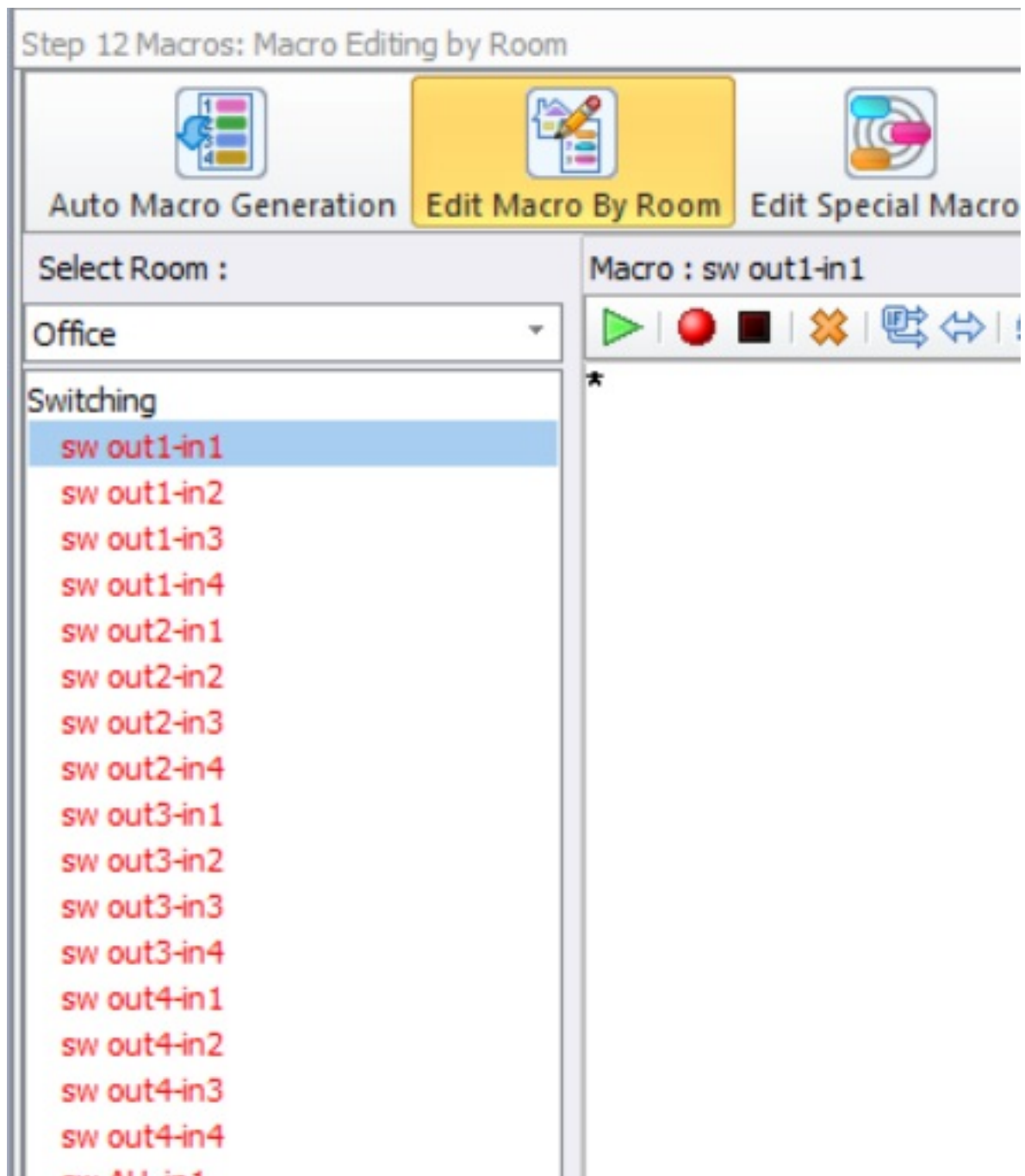
Once you have added all of the buttons you require you can assign macros to them - please see the next section for further details.

## Macros

Ensure that system macros are generated for each instance of the driver by configuring **Program -> 12. Macro Editing** appropriately for your system.

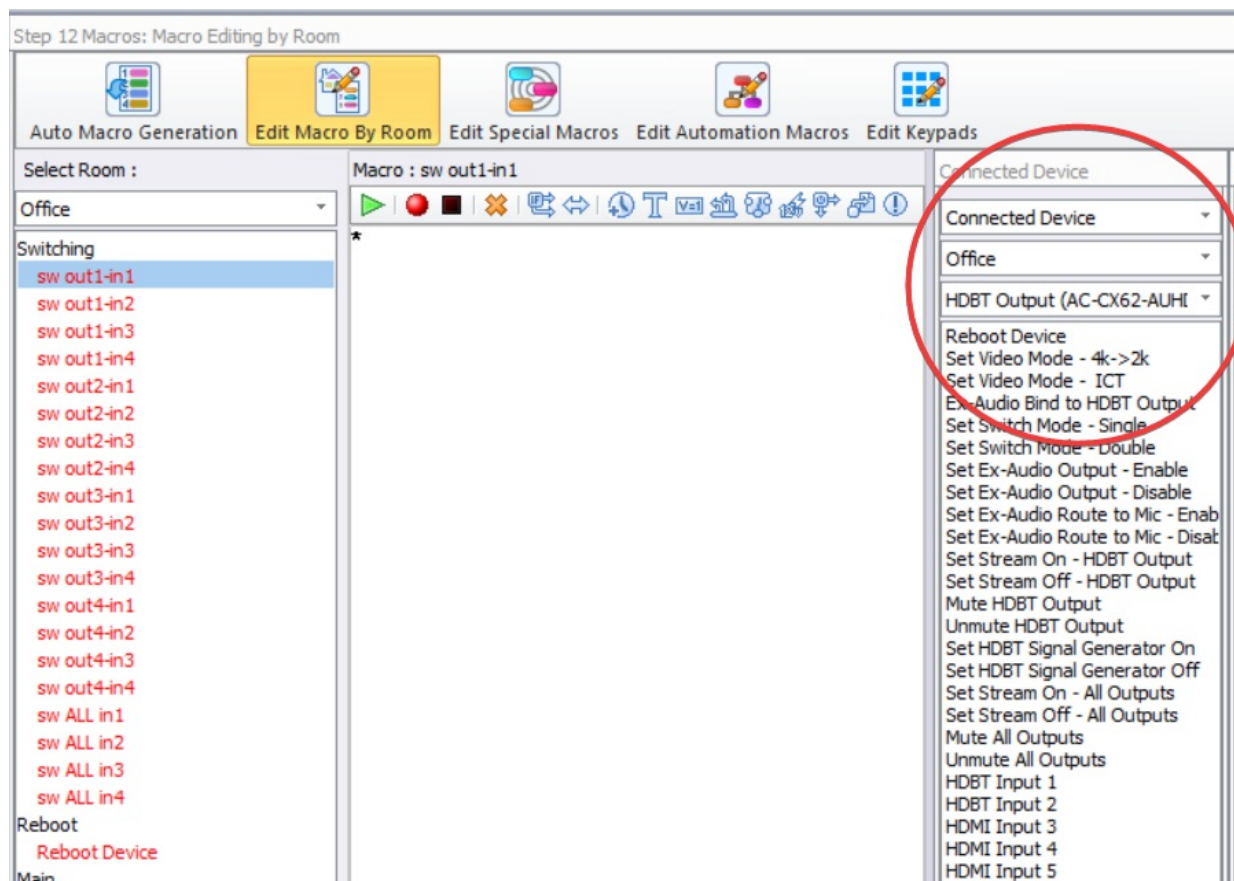
You can view a list of user interface buttons that can be assigned macros by selecting the **Edit Macro By Room** tab and selecting the appropriate room from the drop down menu:



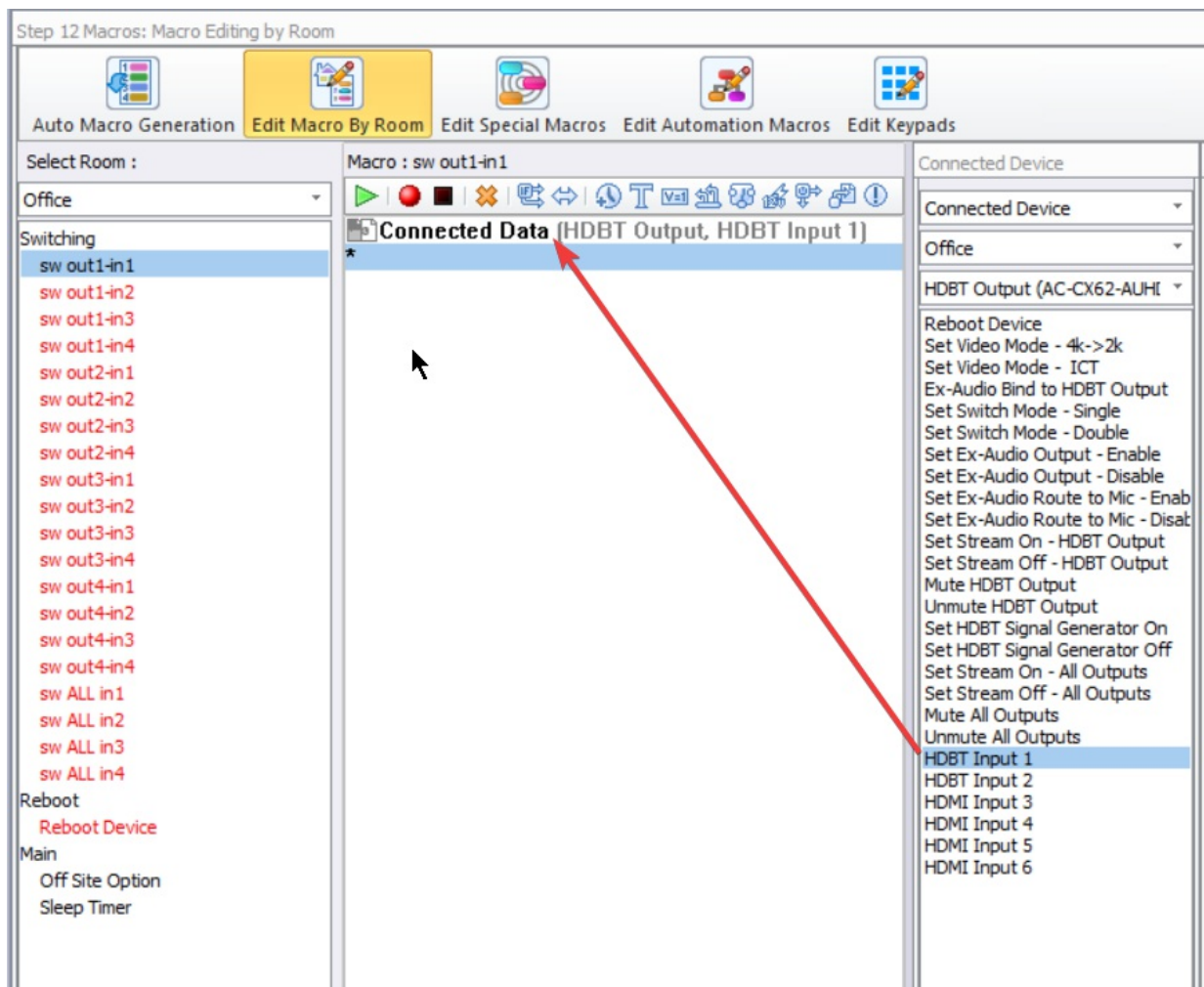


Buttons without actions assigned to them will be shown in **red**.

To add a command to an existing macro select **Connected Device** from the drop-down menu on a window to the right. Then select the desired **Room** from the next drop-down menu. Then select the **device** and its output you would like to add a command for. All the commands should be present now in the window:



To add the command, you must drag and drop it into the macro of choice:



## Commands

In this section you can find a list of all the available commands:

- **Switch one input to one output**
  - Switches one input to one specific output on matrix (a basic switch)
- **Reboot Device**
- **Set Video Mode**
  - Set output video mode (2K->4K, ICT Mode)
- **Set Ex-Audio Output Binding**
  - Set Ex-Audio output bind
- **Set Switch Mode**
  - Set switch mode to single/double
- **Set Ex-Audio Output State**

- Enable/Disable Ex-Audio
- **Set Ex-Audio Mic Route**
  - Set EX-Audio Route to Microphone Input Enable/Disable
- **Set Output Stream State**
  - Set individual output streams on/off
  - Set all outputs streams on/off
- **Mute/Unmute Outputs**
  - Mute/Unmute individual outputs
  - Mute/Unmute all outputs
- **HDBT Signal Generator**
  - Set HDBT Output Signal Generator Enable/Disable
- **HDMI Signal Generator**
  - Set HDMI Output Signal Generator Enable/Disable

## Downloading the Driver

Once you have configured the driver using the steps provided above you can now download the revised system configuration to your URC base station.

## User Interfaces

The driver package **does not** include pre-designed interfaces.